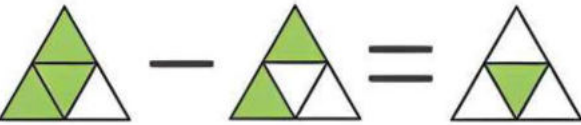




## SUBTRACT THE GIVEN FRACTIONS AND COLOUR THEM




$\frac{3}{4} - \frac{2}{4} = \frac{1}{4}$




— — — =  $\frac{\square}{\square}$




— — — =  $\frac{\square}{\square}$



— — — =  $\frac{\square}{\square}$



— — — =  $\frac{\square}{\square}$

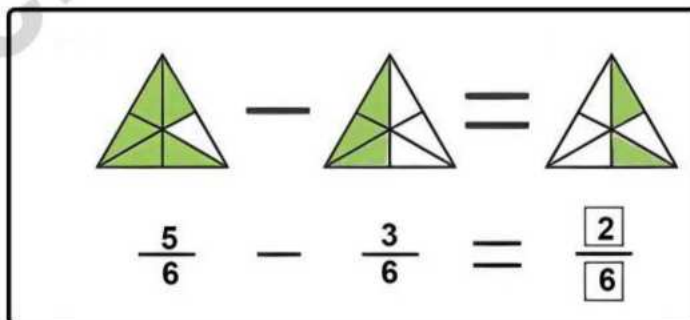
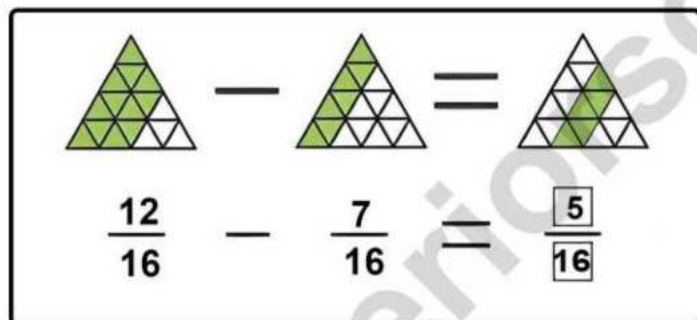
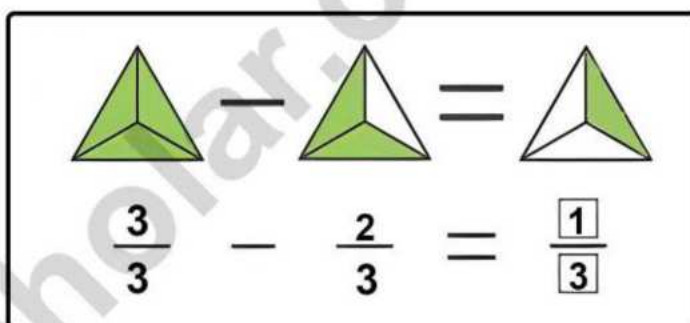
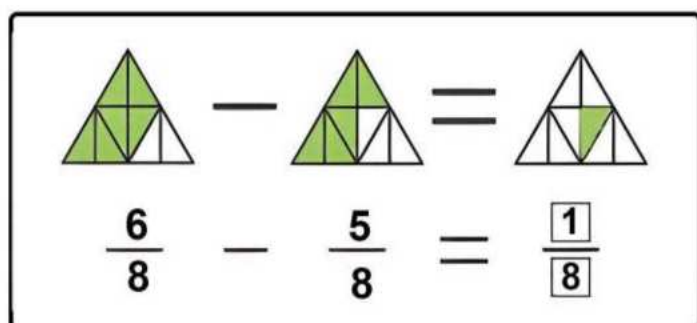
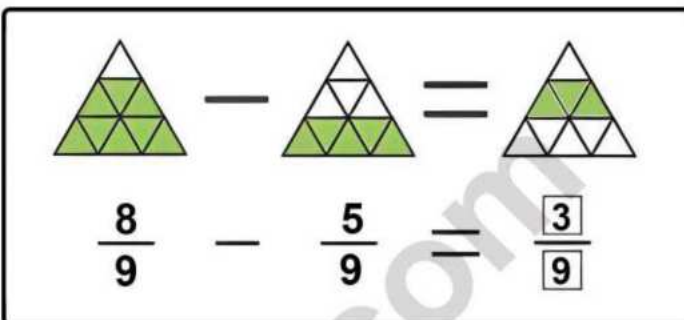
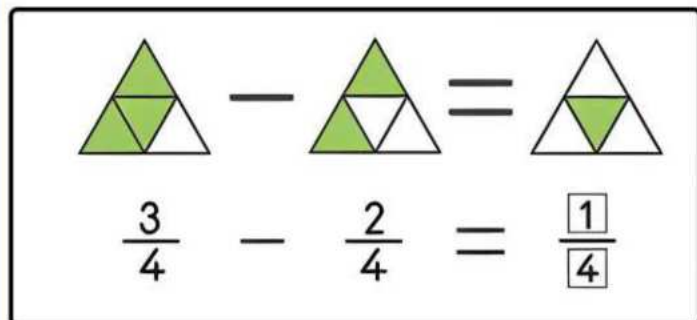


— — — =  $\frac{\square}{\square}$

### Subtraction Of Fractions

- 1) Subtract  $\frac{2}{5}$  from  $\frac{4}{5}$
- 2) What is  $\frac{5}{6} - \frac{2}{6}$ ?
- 3) Subtract  $\frac{1}{4}$  from  $\frac{3}{4}$ .
- 4) Find the difference:  $\frac{7}{8} - \frac{5}{8}$
- 5) What is  $\frac{6}{10} - \frac{4}{10}$ ?

### SUBTRACT THE GIVEN FRACTIONS AND COLOUR THEM



### Subtraction Of Fractions

- 1)  $\frac{2}{5}$
- 2)  $\frac{3}{6}$
- 3)  $\frac{2}{4}$
- 4)  $\frac{2}{8}$
- 5)  $\frac{2}{10}$